

YL863C101

MOTORISED CHANGEOVER SWITCH 1-0-2 4P 250A INCOMING ON BOTTOM. 12V DC

Code	007YL863C101
EAN	8430892333528

Product description

Motorised changeover switch 1-0-2 , 4 poles 250A with motor unit supply 12V dc. The supply incoming cables are connected on the bottom side of the unit and the load outgoing cables are connected on the top side. Size D3 dimensions 185x195x113, includes auxiliary contact 12A. Back plate mounting. Built-in internal links, mechanical and electrical interlock. Local emergency operation, includes removable padlockable handle. Display for switch position indication and operation counter. Impulse control logic. Protection against supply voltage failure . Terminal connection with tubular cable lugs M8 up to 120mm².

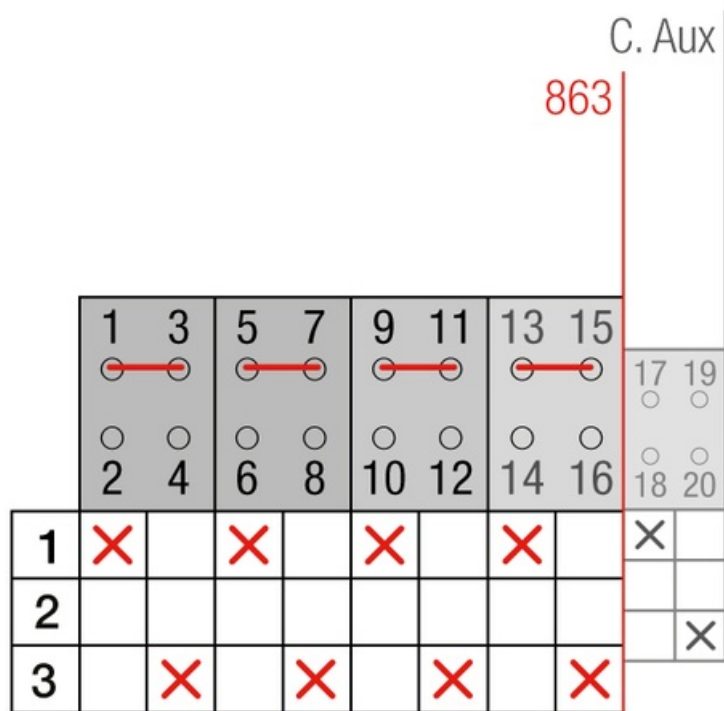
Logistic data

Customs code	85365080
ETIM code	EC000216

Technical data

Poles	4
Y5 Type	86
Supply	12V DC

Connection



Dimensions

