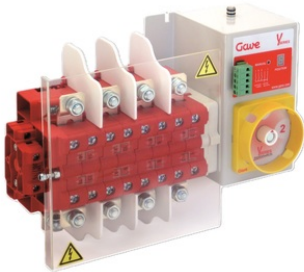


YL863B101

MOTORISED CHANGEOVER SWITCH 1-0-2 4P 200A INCOMING ON BOTTOM. 12V DC



Code	007YL863B101
EAN	8430892333467

Product description

Motorised changeover switch 1-0-2 , 4 poles 200A with motor unit supply 12V dc. The supply incoming cables are connected on the bottom side of the unit and the load outgoing cables are connected on the top side. Size D3 dimensions 185x261x113, includes auxiliary contact 12A. Back plate mounting. Built-in internal links, mechanical and electrical interlock. Local emergency operation, includes removable padlockable handle. Display for switch position indication and operation counter. Impulse control logic. Protection against supply voltage failure . Terminal connection with tubular cable lugs M8 up to 120mm².

Logistic data

Customs code	85365080
ETIM code	EC000216

Technical data

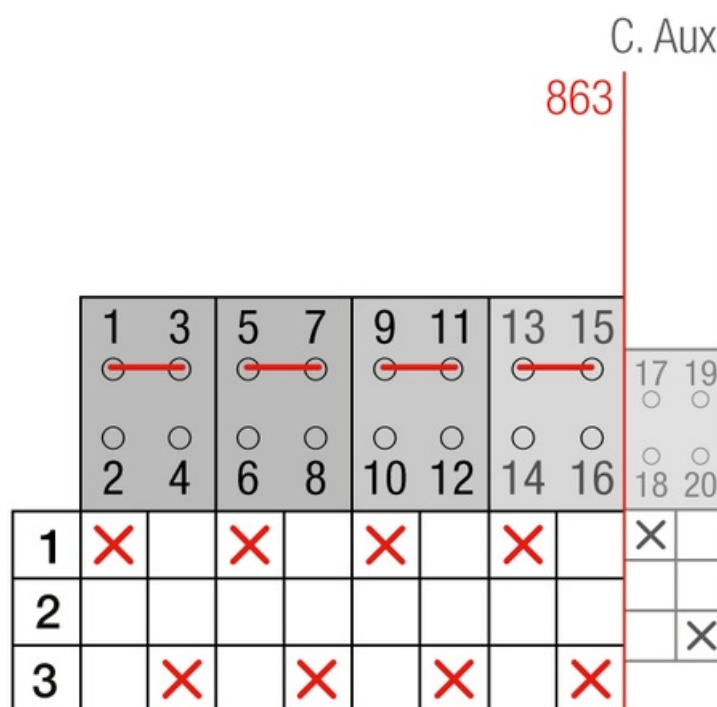
Poles	4
Rated voltage / frequency	690 V / 50 Hz
Operational rating (Ie)	200 A
Thermal rating (Ith)	200 A
Wire cross section	95 mm ²
Tightening torque	6 Nm
Connection screws	M8

Terminal



Peak consumption	2,5 A
Nominal consumption	40 mA
Weight	2850 gr
Supply voltage (V DC)	12V +15%
Y5 Type	86
Supply	12V DC

Connection



Dimensions

