

## YL8626101

MOTORISED CHANGEOVER SWITCH 1-0-2 3P 63A INCOMING ON BOTTOM. 12V DC



<b>Code</b>	007YL8626101
<b>EAN</b>	8430892333207

### Product description

Motorised changeover switch 1-0-2 , 3 poles 63A with motor unit supply 12Vdc . The supply incoming cables are connected on the bottom side of the unit and the load outgoing cables are connected on the top side. Size D2 dimensions 147x178x113, includes auxiliary contact 12A. Back plate mounting. Built-in internal links, mechanical and electrical interlock. Local emergency operation, includes removable padlockable handle. Display for switch position indication and operation counter. Impulse control logic. Protection against supply voltage failure . Cable clamp connection for wires 16-50mm<sup>2</sup>.

**Logistic data**

---

Customs code	85365080
ETIM code	EC000216

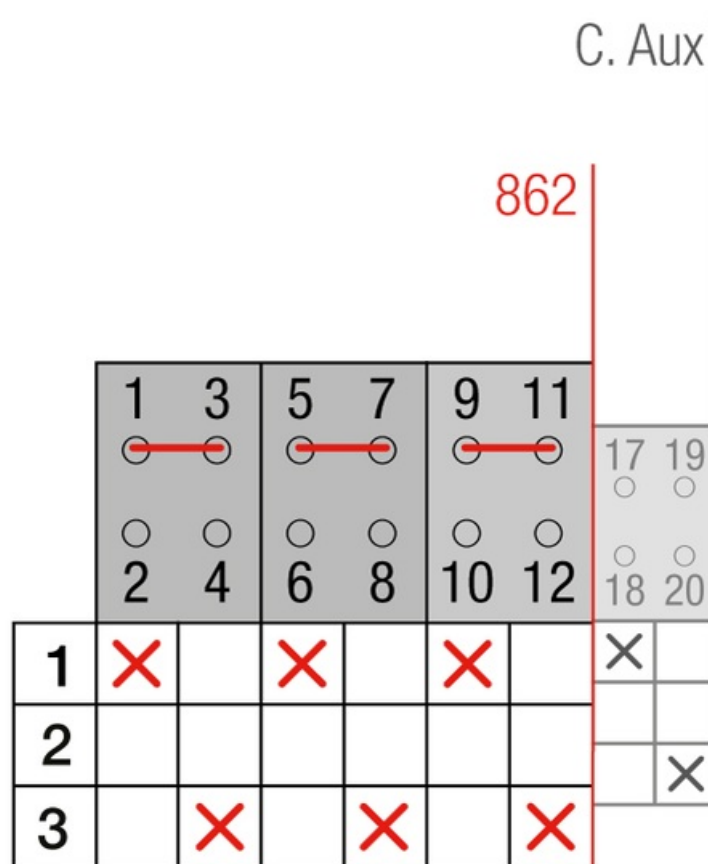
**Technical data**

---

Poles	3
Y5 Type	86
Supply	12V DC

**Connection**

---



## Dimensions

---

