

## YL5637301

MOTORISED CHANGEOVER SWITCH 1-0-2 4P 100A INCOMING ON TOP. 80-230VAC



Code

007YL5637301

EAN

8430892213738

### Product description

Motorised changeover switch 1-0-2 , 4 poles 100A with motor unit supply 80-230Vac . The supply incoming cables are connected on the top side of the unit and the load outgoing cables are connected on the bottom side. Size D2 dimensions 147x195x113, includes auxiliary contact 12A. Back plate mounting. Built-in internal links, mechanical and electrical interlock. Local emergency operation, includes removable padlockable handle. Display for switch position indication and operation counter. Impulse control logic. Protection against supply voltage failure . Cable clamp connection for wires 16-50mm<sup>2</sup>.

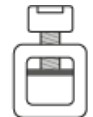
### Logistic data

Customs code	85365080
ETIM code	EC000216

### Technical data

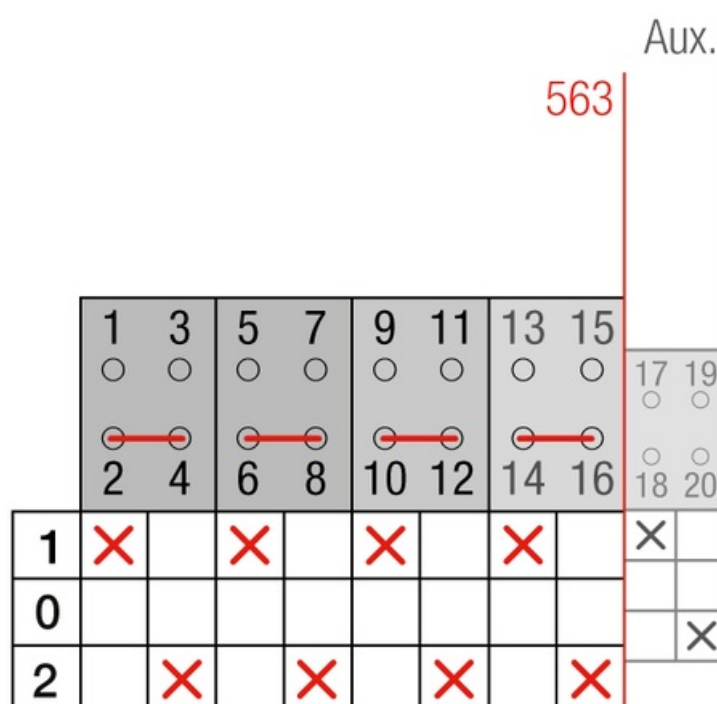
Poles	4
Rated voltage / frequency	690 V / 50 Hz
Operational rating (Ie)	100 A
Thermal rating (Ith)	100 A
Wire cross section	16-50 mm <sup>2</sup>
Tightening torque	3,5 Nm
Connection screws	M8

### Terminal



Peak consumption	2,5 A
Nominal consumption	40 mA
Weight	2250 gr
Supply voltage (V DC)	12 V +15%
Standard	IEC 60947-3
Y5 Type	56
Supply	80-230V AC

### Connection



**Dimensions**

