

Y-5635301

MOTORIZED CHANGEOVER SWITCH 1-0-2 4P 63A AC1 INCOMING ON TOP. 80-230VAC



Code	007Y-5635301
EAN	8430892196864

Product description

Motorised changeover switch 1-0-2 , 4 poles 63A AC22 with motor unit supply 80-230Vac . The supply incoming cables are connected on the top side of the unit and the load outgoing cables are connected on the bottom side. Size D1 dimensions 135x140x80, includes auxiliary contact 12A. Back plate mounting. Built-in internal links, mechanical and electrical interlock. Local emergency operation, includes removable padlockable handle. Display for switch position indication and operation counter. Impulse control logic. Protection against supply voltage failure . Cable clamp connection for wires 6-16mm².

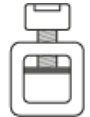
Logistic data

Customs code	85365080
ETIM code	EC000216

Technical data

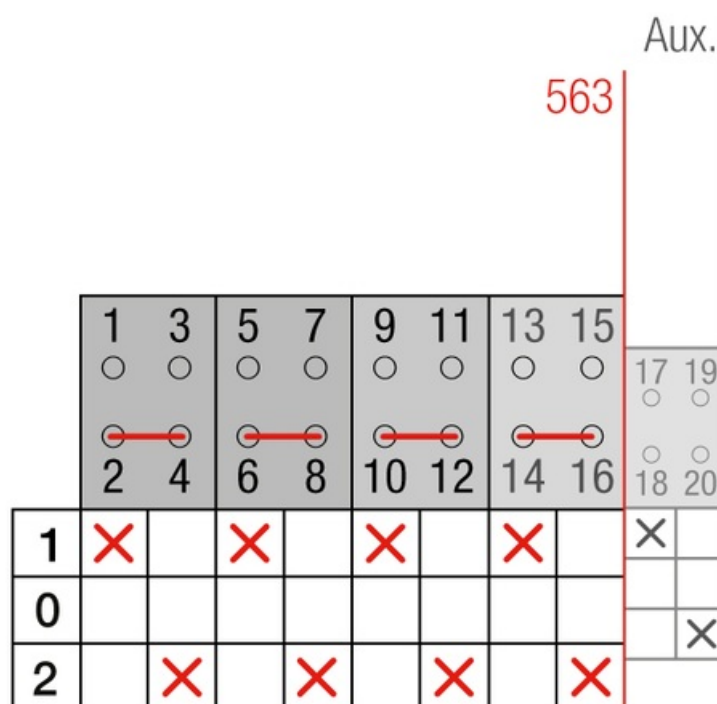
Poles	4
Rated voltage / frequency	690 V / 50 Hz
Operational rating (I _{op})	63 A
Thermal rating (I _{th})	63 A
Wire cross section	6-16 mm ²
Tightening torque	3,5 Nm
Connection screws	M5

Terminal



Peak consumption	2 A
Nominal consumption	40 mA
Weight	1200 gr
Supply voltage (V DC)	12 V +15%
Standard	IEC 60947-3
Y5 Type	56
Supply	80-230V AC

Connection



Dimensions

