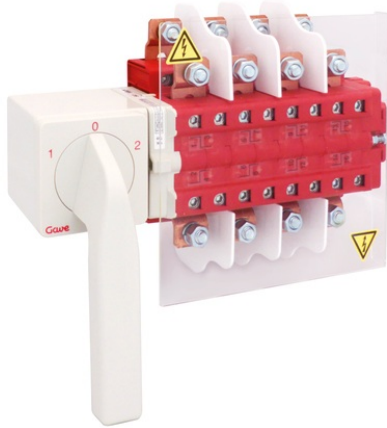


LDA63C100

LD CHANGEOVER SWITCH 4P 250A + CA



Code	009LDA63C100
EAN	8430892215626

Logistic data

Customs code	85365080
ETIM code	EC000216
Package units	1
Package height (mm)	150
Package width (mm)	195
Package length (mm)	280

Technical data

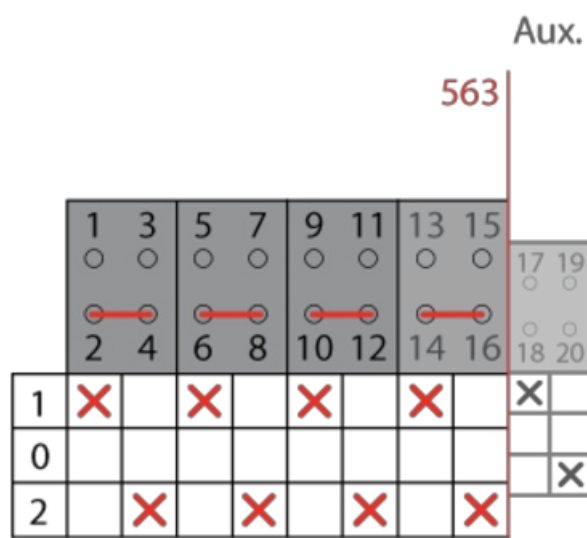
Poles	4
Auxiliary	1NO
Operational rating (I _e)	250 A
Thermal rating (I _{th})	250 A
Wire section flexible	120 mm ²
Connection screws	M8

Terminal



Max. fuse protection (gG/aM)	250 A (415 V)
	250 A (500 V)
Conditional shortcircuit current (I _{cc})	8 kA (415 V)
	8 kA (500 V)
Insulating voltage (V~)	690
Insulating voltage (V...)	600
Dummy AC-21A	75 kW (3x230 V)
	132 kW (3x415 V)
	160 kW (3x500 V)
Mixed load AC-22A	75 kW (3x230 V)
	132 kW (3x415 V)
	132 kW (3x500 V)
Motor load AC-23A	75 kW (3x230 V)
	110 kW (3x415 V)
Standard	IEC 60947-3

Connection



Dimensions

