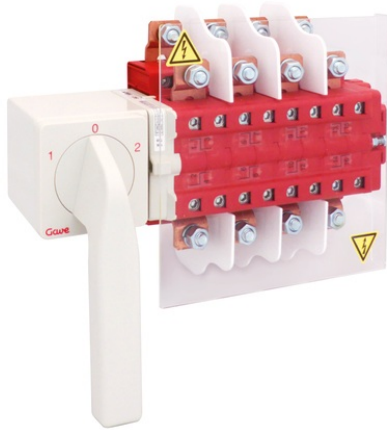


## LDA63B100

LD CHANGEOVER SWITCH 4P 200A + CA



**Code**

009LDA63B100

**EAN**

8430892215619

---

## Logistic data

---

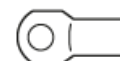
Customs code	85365080
ETIM code	EC000216
Package units	1

## Technical data

---

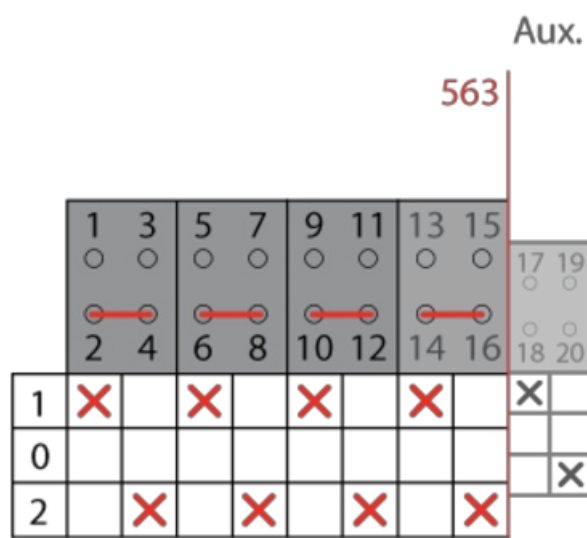
Poles	4
Auxiliary	1NO
Operational rating (Ie)	200 A
Thermal rating (Ith)	200 A
Wire section flexible	95 mm <sup>2</sup>
Connection screws	M8

### Terminal



Max. fuse protection (gG/aM)	200 A (415 V)
	200 A (500 V)
Conditional shortcircuit current (Icc)	8 kA (415 V)
	8 kA (500 V)
Insulating voltage (V~)	690
Insulating voltage (V...)	600
Dummy AC-21A	55 kW (3x230 V)
	110 kW (3x415 V)
	132 kW (3x500 V)
Mixed load AC-22A	55 kW (3x230 V)
	110 kW (3x415 V)
	110 kW (3x 500 V)
Motor load AC-23A	55 kW (3x230 V)
	90 kW (3x415 V)
Standard	IEC 60947-3

## Connection



## Dimensions

