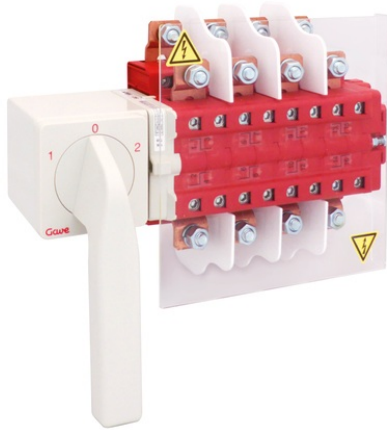


LDA63A100

LD CHANGEOVER SWITCH 4P 160A + CA



Code

009LDA63A100

EAN

8430892215602

Logistic data

Customs code	85365080
ETIM code	EC000216
Package units	1
Package height (mm)	150
Package width (mm)	195
Package length (mm)	280

Technical data

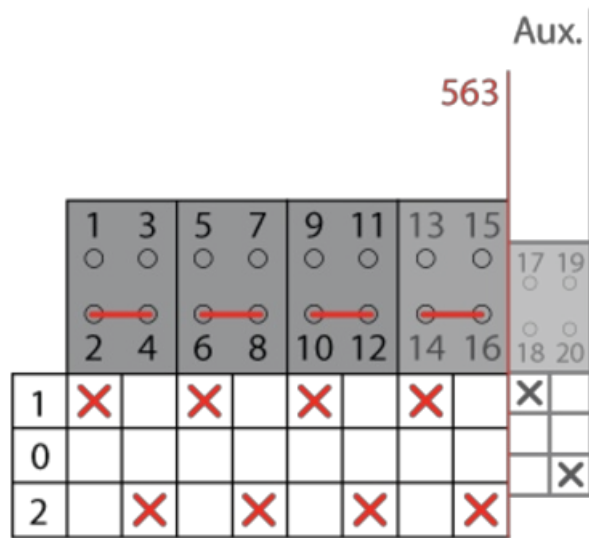
Poles	4
Auxiliary	1NO
Operational rating (I _e)	160 A
Thermal rating (I _{th})	160 A
Wire section flexible	70 mm ²
Connection screws	M8

Terminal



Max. fuse protection (gG/aM)	160 A (415 V)
	160 A (500 V)
Conditional shortcircuit current (I _{cc})	8 kA (415 V)
	8 kA (500 V)
Insulating voltage (V~)	690
Insulating voltage (V...)	600
Dummy AC-21A	45 kW (3x230 V)
	90 kW (3x415 V)
	110 kW (3x500 V)
Mixed load AC-22A	45 kW (3x230 V)
	90 kW (3x415 V)
	90 kW (3x500 V)
Motor load AC-23A	45 kW (3x230 V)
	75 kW (3x415 V)
Standard	IEC 60947-3

Connection



Dimensions

