

## LDA636100

LD CHANGEOVER SWITCH 4P 63A + CA



---

<b>Code</b>	009LDA636100
<b>EAN</b>	8430892215572

---

## Logistic data

Customs code	85365080
ETIM code	EC000216
Package units	1
Package height (mm)	150
Package width (mm)	170
Package length (mm)	205

## Technical data

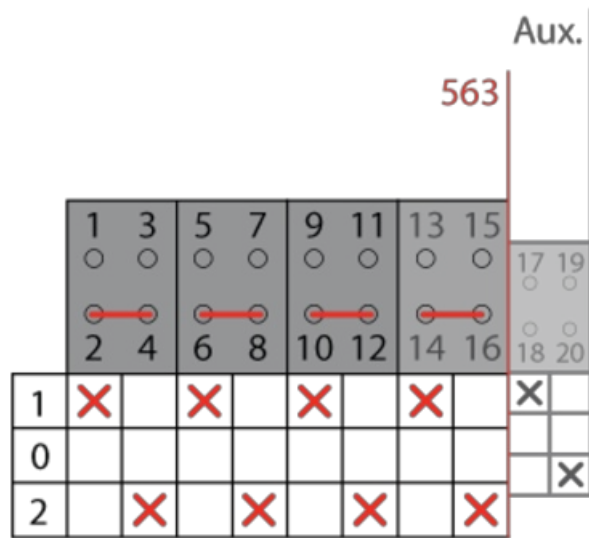
Poles	4
Auxiliary	1NO
Operational rating (I <sub>e</sub> )	63 A
Thermal rating (I <sub>th</sub> )	70 A
Wire section (AWG)	16 - 1
Wire section flexible	16 - 50 mm <sup>2</sup>
Tightening torque	3,5 Nm
Connection screws	M8

### Terminal



Max. fuse protection (gG/aM)	63/63 A (415 V)
	63/63 A (500 V)
Conditional shortcircuit current (I <sub>cc</sub> )	8 kA (415 V)
	8 kA (500 V)
Insulating voltage (V~)	690
Insulating voltage (V...)	600
Dummy AC-21A	22 kW (3x230 V)
	45 kW (3x415 V)
	45 kW (3x500 V)
Mixed load AC-22A	18,5 kW (3x230 V)
	37 kW (3x415 V)
	45 kW (3x500 V)
Motor load AC-23A	18,5 kW (3x230 V)
	30 kW (3x415 V)
	37 kW (3x500 V)
Standard	IEC 60947-3

## Connection



## Dimensions

