

LD984B100

BYPASS LD CHANGEOVER SWITCH 4P+8P 200A

Code	009LD984B100
EAN	8430892262255

Logistic data

Customs code	85365080
ETIM code	EC000216
Package units	1

Technical data

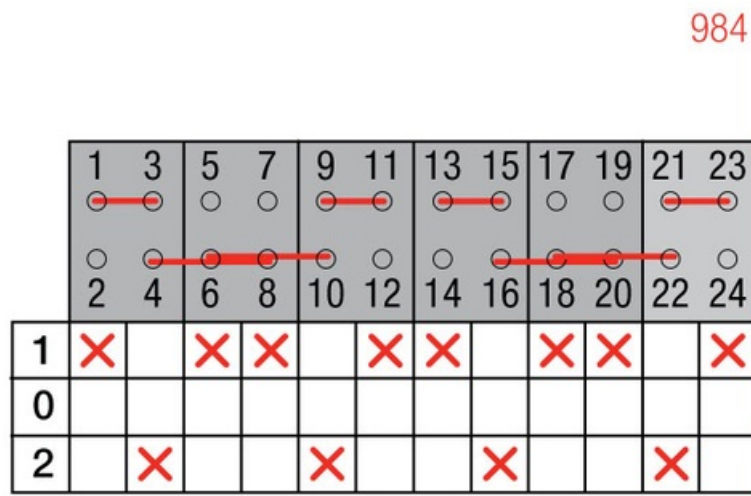
Poles	4
Operational rating (Ie)	200 A
Thermal rating (Ith)	200 A
Wire section flexible	95 mm ²
Connection screws	M8

Terminal



Max. fuse protection (gG/aM)	200 A (415 V)
	200 A (500 V)
Conditional shortcircuit current (Icc)	8 kA (415 V)
	8 kA (500 V)
Insulating voltage (V~)	690
Insulating voltage (V...)	600
Dummy AC-21A	55 kW (3x230 V)
	110 kW (3x415 V)
	132 kW (3x500 V)
Mixed load AC-22A	55 kW (3x230 V)
	110 kW (3x415 V)
	110 kW (3x 500 V)
Motor load AC-23A	55 kW (3x230 V)
	90 kW (3x415 V)
Standard	IEC 60947-3

Connection



Dimensions

