

ACM25RDA

AC MODULAR COMBINER BOX SINGLE PHASE MCB 25A RCCB WITH AUTOMATIC RECLOSING TYPE A 30MA



| | |
|-------------|---------------|
| Code | 029ACM25RDA |
| EAN | 8430892334259 |

Product description

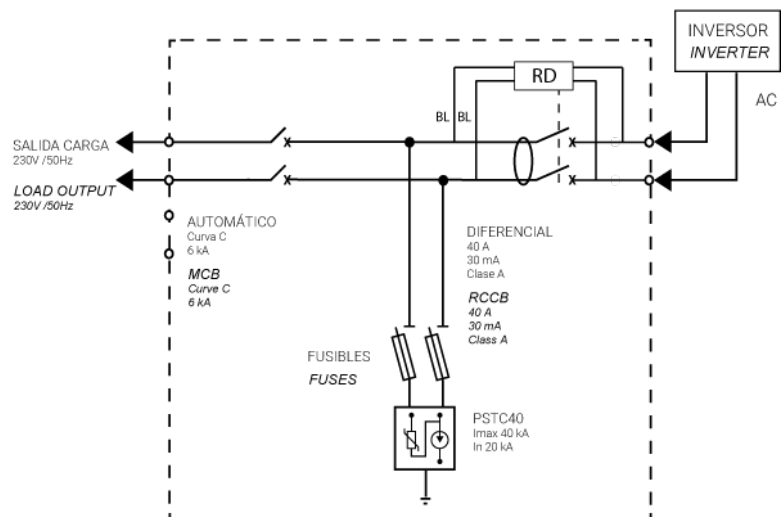
Modular combiner box with mcb, rccb and overvoltage protection . Modular circuit breaker two pole 25A C curve breaking capacity 6kA - EN 60898-1. Residual current circuit breaker two pole type A sensitivity 30mA for alternating current with pulsed direct current, protected against nuisance tripping 0,25kA, EN 61008-1 with automatic reclosing according to EN 63024. Overvoltage protection ClassII In 20kA I_{max} 40kA U_p 1,5kV EN 61643-11 with associated fuse protection. Double insulation Class II box in polycarbonate material for indoor and outdoor use with high impact resistance (IK08). Dimensions 246x310x148mm

Combiner box technical data

| | |
|----------------------------------|----------------------------------|
| MCB - Circuit breaker | 25 A |
| Curve | C |
| Breaking capacity EN 60898-1 | 6 kA |
| RCCB type | A - 30mA (EN 61008-1 / EN 63024) |
| Inverter AC output | 1P+N |
| Diferential type | 30mA |
| Surge protector code | PSTC40 |
| Surge protector type | II |
| Nominal discharge current (In) | 20 kA |
| Maximum discharge current (Imax) | 40 kA |
| Protection level at In (Up) | 1.5 kV |
| Ingress protection IP | IP65 - IEC 60529 |
| Impact protection IK | IK08 - IEC 62262 |
| Standards | IEC EN 6143-1/2 |

Diagrams

Electrical diagram



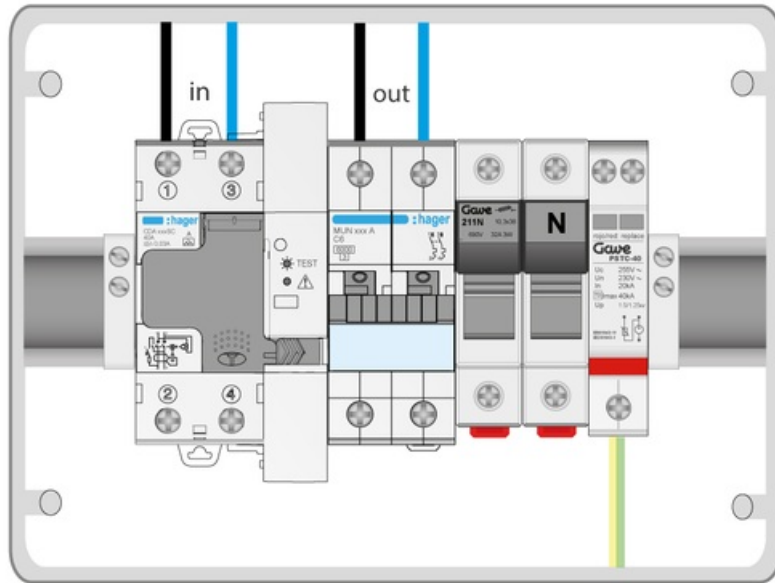
Dimensions

| | |
|----------------|--------|
| Product height | 231 mm |
| Product width | 238 mm |
| Product length | 118 mm |

Logistic data

| | |
|--------------|----------|
| Customs code | 85371098 |
|--------------|----------|

Connection



Dimensions

